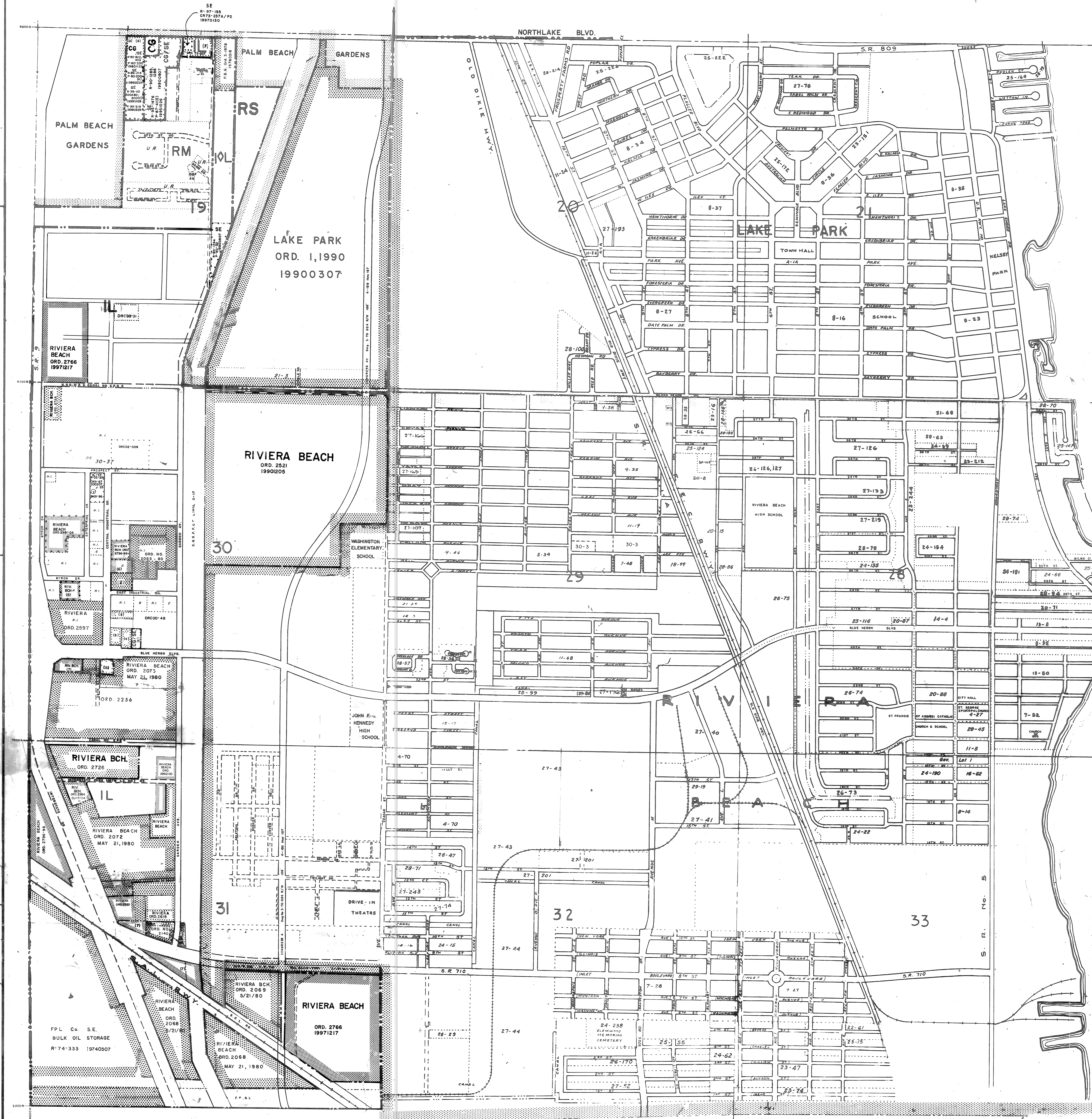


WORTH

LAKELAKE

PORT OF PALM BEACH



RESOLUTIONS		ANNEXATIONS	
217-88-108, 03/88	(F) IL R. 74-02	10180-100-101-100	
R. 81-1222, 09/10/82	1970029	10180-100-101-100	
19188 R-81-756, 09/08/86	(M) R-87-1034, 08/87	10180-100-101-100	
14102 R-75-704, 07/01/87		10180-100-101-100	

--- DISTRICT BOUNDARIES
 ■■■ CORPORATE BOUNDARIES

The zoning category for the property indicated on this sheet may not be consistent with the property's Future Land Use designation under the Palm Beach County Comprehensive Plan. Please contact the Palm Beach County Planning Division at 100 Australian Avenue, West Palm Beach, FL 33406, (561) 235-5200, to confirm the property's Future Land Use designation and other relevant Comprehensive Plan requirements.

PALM BEACH COUNTY, FLORIDA
OFFICIAL ZONING DISTRICT MAP

Scale 1" = 600' approx. Date _____

Quadrant 42 43C Sheet No. 14